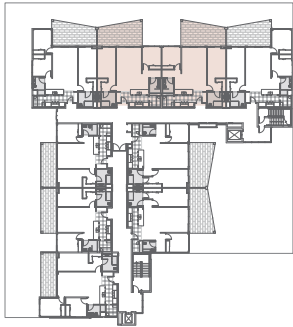




*Balcony - Artist Impression

THE
Melville

KEY PLAN



GF: 102, 103

L1: 111, 112

L2: 120, 121

L3: 129, 130



SPECIFICATIONS

- 2 Bedroom
- 2 Bathroom
- 1 Laundry
- 1 Study Nook
- 1 Car Bay & Storage room

APARTMENT AREA

Ground Floor

Apartment	106m ²
Courtyard	72m ² - 75m ²
Total Living Area	178m ² - 181m ²

Upper Floors

Apartment	106m ²
Balcony	27m ²
Total Living Area	133m ²

*Floor plan represents apartment 112 in the North facing.